



Group H



Bare-hand Equipment

Conductive Suits.....	263
Bare-hand Working Chair.....	266
Bare-hand Stick.....	267



Group H

Bare-hand Equipment



Conductive Suits

The Conductive Suit has been designed specially for works on EHV transmission systems and substations up to 800 kV.

It allows the lineman to equalize his potential with the electrical field of the energized system where the maintenance works will be performed.

The working principle of the Conductive Suit is based on the Faraday Cage principle, offering safe and comfortable working conditions on energized systems.

Made of high technology fabric based on aramid and stainless steel micro-fibers with reinforced sewing.

The Conductive Suits are available in three sizes: medium, large and extra-large.

The anatomic design allows the linemen to use the safety helmet underneath the hood of the Conductive Suit, without limitation of the movements and maintaining the Faraday Cage effect around the head.

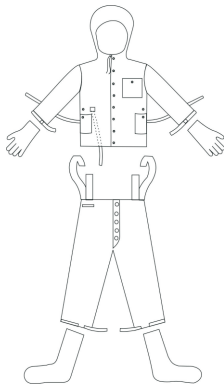
The conductive suit meets all IEC 60895 standard requirements.



H



The routine tests report is provided together with the Conductive Suit. These test data are extremely important as reference for the continuous monitoring of the quality and performance of the Conductive Suit, even after years of use and many washings.



CONDUCTIVE SUITS

Cat. No	Description	Size	Approx. Weight (kg)
RC402-0533/C	Complete, composed of trousers, jacket, socks, gloves and storage bag	Medium	1.55
RC402-0534/C	Complete, composed of trousers, jacket, socks, gloves and storage bag	Large	1.65
RC402-0535/C	Complete, composed of trousers, jacket, socks, gloves and storage bag	Extra Large	1.75
RC402-0533	Conductive Trousers and Jacket, with storage bag	Medium	1.38
RC402-0534	Conductive Trousers and Jacket, with storage bag	Large	1.48
RC402-0535	Conductive Trousers and Jacket, with storage bag	Extra Large	1.58
RC402-0558	Conductive gloves	Only	0.12
RC402-0578	Conductive socks	Only	0.05
RP6252	Plastic storage bag for conductive suits	-	0.13

The Conductive Boots have been specially designed to provide efficient electrical connection of low ohmic resistance, therefore suitable for the linemen performing operations where the potential equalization with the working structure is required.

The conductive boots meet the IEC 60895 standard requirement.

They are available from size 37 through 46 (Brazilian size - please refer to your country size pattern).



CONDUCTIVE BOOTS			
Cat. No.	Size		
	Brazil	USA	Europe
RC417-0623	37	6	39
RC417-0624	38	7	40
RC417-0624/5	39	7.5	41
RC417-00122/5	40	8.5	42
RC417-0123/5	41	9.5	43
RC417-0124	42	10	44
RC417-0125	43	11	45
RC417-0126	44	12	46
RC417-0126/5	45	12.5	47
RC417-0625/5	46	13.5	48

H



FLV12563-1

Bare-hand Working Chair

The Bare-hand Working Chair has been specially designed to make the transportation of the lineman from ground to the system where maintenance will be performed easier and quicker, and also to allow the lineman approaching the structure safely, quickly and comfortably.

The light-weight and resistant anatomic design, made of *RITZGLAS*® poles and aluminum fittings, allows horizontal and vertical displacement with absolute accuracy, when working with the Bare-hand Method. In order to ease transportation and storage, the Bare-hand Working Chair can be completely disassembled.

The Bare-hand Working Chair is equipped with a safety belt for the lineman.

BARE-HAND WORKING CHAIR		
Cat. No.	Maximum Work Load (daN)	Approx. Weight (kg)
FLV12563-1	120	19.80



Bare-hand Stick

The Bare-hand Stick is used for connecting the conductive strap of the Conductive Suit with the energized conductor, to equalize the potential between Conductive Suit and energized conductor. This prevents possible discomfort while performing live works.

Whenever performing maintenance with the Bare-hand Method, the first contact between the Conductive Suit and the energized conductor is made by the Bare-hand Stick. Similarly, at the end of the work, the Bare-hand Stick will be the last component to be disconnected, preventing thus the electrical arch from reaching the lineman.

When returning to ground potential, first the Bare-hand Stick must touch the structure to discharge of the static energy.

The models FLV06858-1 and FLV02544-1 are made of Ø 32 mm *RITZGLAS*® poles and the model FLV11493-1 is made of Ø 13 mm fiberglass rod and handle.

Types of Connection

Clamp attached to the pole: the clamp connects to the conductor by twisting the stick, and both the stick and the clamp remain attached to the conductor during the maintenance works.

Detachable clamp: the clamp also connects to the conductor by twisting the stick, however it allows the lineman to remove the stick, leaving only the clamp attached to the conductor (this clamp is provided with quick connection head, which connects to the clamp eye-ring firmly and safely).

Quick-action clamp: Differently from the above two clamps, there is no need to twist the stick to connect the clamp to the conductor, for it connects to the conductor only by quick spring action.

All models are equipped with pole hanger and provisions for connection of the conductive strap of the Conductive Suit.

BARE-HAND STICK

Cat. No.	Description	Insulating Length (mm)	Clamp Opening Min. Max. (mm)	Approx. Weight (kg)
FLV02544-1	With detachable clamp	340	12 48	1.60
FLV06858-1	With clamp attached	370	12 48	1.45
FLV11493-1	With quick-action clamp, attached to fiberglass rod and handle	415	10 40	0.60

FLV06858-1



FLV02544-1



FLV11493-1



